

Onion fly

Delia antiqua

What crops does it affect?

Onions, shallots, leeks, garlic, chives, Japanese bunching onions and Welsh onions.

What does it look like?

Adults: About 7mm long, yellowish grey with five dark stripes on the thorax, yellowish wings, black legs and antennae, similar in appearance to a domestic fly.

Eggs: Dull white, long white stripes

Larvae: A white maggot which reaches 8mm when its development is complete.

Which part of the plant will be damaged?

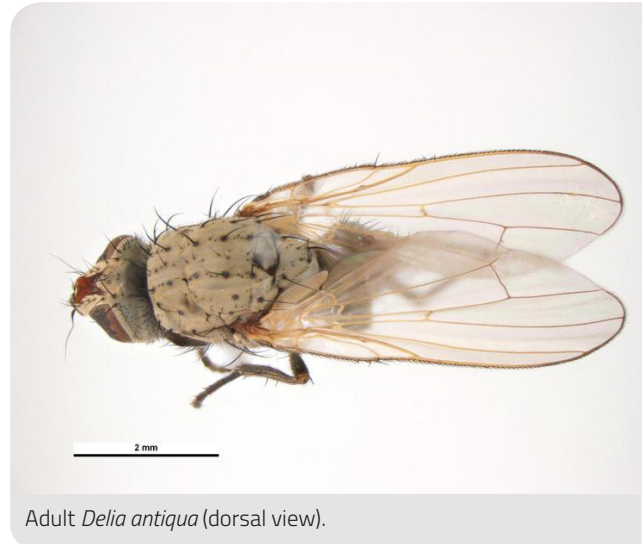
Bulbs, leaves, roots, seedling.

What should I look for?

Yellowing and wilting of the host's outer leaves. Green and apparently healthy leaves will become floppy, and the whole plant may collapse. Later generations of larvae tunnel into the onion bulbs as well as attack the roots.

How does it spread?

Infested soil and plant material.



Adult *Delia antiqua* (dorsal view).

Simon Hinkley & Ken Walker, Museum Victoria, Pest & Diseases Image Library (PaDIL), www.padil.gov.au



Adult *Delia antiqua* (lateral view).

Simon Hinkley & Ken Walker, Museum Victoria, Pest & Diseases Image Library (PaDIL), www.padil.gov.au

**IF YOU SEE ANYTHING UNUSUAL,
CALL THE EXOTIC PLANT PEST HOTLINE**

1800 084 881

DISCLAIMER: The material in this publication is for general information only and no person should act, or fail to act on the basis of this material without first obtaining professional advice. Plant Health Australia and all persons acting for Plant Health Australia expressly disclaim liability with respect to anything done in reliance on this publication.