

## Angular leaf spot

### What is it?

Angular leaf spot is a bacterial disease of strawberries that is not present in Australia. It is caused by the pathogen *Xanthomonas fragariae*.

It is a significant threat to the Australian strawberry industry because if it arrived, it would be difficult to control.

### What to look for?

Look out for angular leaf spots, appearing at first as small 1-4mm angular water soaked spots on the lower surface of the leaf. The spots are translucent against light. They later enlarge and coalesce and after about 14 days start to become visible on the upper surfaces of the leaves becoming reddish brown in colour. The dead tissues tear and break off and the diseased leaves appear ragged in appearance. In severe cases, plants may become defoliated.



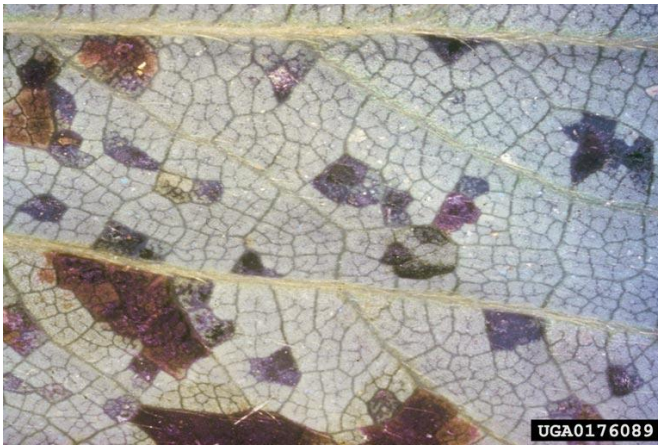
Strawberry leaf severely affected by *X. fragariae*. Note its ragged appearance and the coalescence of the spots along the main veins.

U. Mazzucchi, Università di Bologna



Close-up of *X. fragariae* lesions on strawberry leaf

U. Mazzucchi, Università di Bologna



U. Mazzucchi, Università di Bologna

Lower surface of a strawberry leaflet affected by *X. fragariae*. Angular, water-soaked and reddish-brown spots are evident.



Università di Bologna Archive

Leaf showing angular, water soaked spots caused by *X. fragariae* infection



Division of Plant Industry Archive, Florida Department of Agriculture and Consumer Services

**Disclaimer:** The material in this publication is for general information only and no person should act, or fail to act on the basis of this material without first obtaining professional advice. Plant Health Australia and all persons acting for Plant Health Australia expressly disclaim liability with respect to anything done in reliance on this publication.

## Where is it found?

Angular leaf spot is found in most countries where strawberries are grown, although many countries report only limited distribution. In the past it has been found in Australia and New Zealand but was eradicated.

Angular leaf spot is exotic to Australia, so if you think you have found this disease report it immediately to maximise the chance of eradication.

## How can I protect my farm from angular leaf spot?

Check your farm frequently for the presence of new pests and unusual symptoms. Make sure you are familiar with common strawberry pests so you can tell if you see something different.

**If you see anything unusual, call the Exotic Plant Pest Hotline on 1800 084 881.**

**EXOTIC PLANT PEST HOTLINE  
1800 084 881**

## Want more info?

If you would like more information, or to download a copy of the Industry Biosecurity Plan for the Strawberry Industry, visit [www.planthealthaustralia.com.au](http://www.planthealthaustralia.com.au), email [admin@phau.com.au](mailto:admin@phau.com.au) or phone (02) 6215 7700.