

## Tropical nut borer

### What is it?

Tropical nut borer (*Hypothenemus obscurus*) is an exotic beetle that attacks the nuts of macadamia. It is not present in Australia. Tropical nut borer is the most important pest to Macadamia production in Hawaii. It can cause damage to up to 60% of the crop in heavily infested areas where harvesting is not strictly managed.

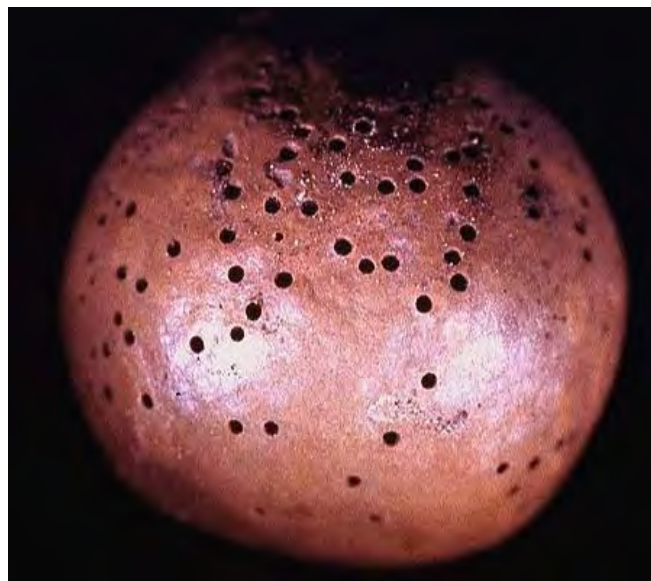
### What to look for

Tropical nut borer damage is usually seen as abundant 0.5 mm holes in the husk of the nut. On closer inspection, extensive tunnelling is visible throughout the husk, shell and kernel. Kernels not consumed but damaged by the borers are open to further spoiling through fungal infection. The beetles are very small and up to 190 have been found in a single macadamia nut.

If you notice these borer symptoms on Macadamia nuts, you should report it immediately to improve the chances of eradicating this potentially devastating insect pest.

### Where is it found?

This borer is widespread in North America including Hawaii, Central and South America where it attacks several tree species.



Damage to a macadamia shell

Vincent P. Jones



Adult female tropical nut borer

Vincent P. Jones





Vincent P. Jones

Damage to a macadamia kernel

## How can I protect my orchard from Tropical nut borer?

Check your orchard frequently for the presence of new pests and unusual symptoms. Make sure you are familiar with common nut pests so you can tell if you see something different.

**If you see anything unusual call the Exotic Plant Pest Hotline on 1800 084 881**

EXOTIC PLANT PEST HOTLINE  
**1800 084 881**

**Disclaimer:** The material in this publication is for general information only and no person should act, or fail to act on the basis of this material without first obtaining professional advice. Plant Health Australia and all persons acting for Plant Health Australia expressly disclaim liability with respect to anything done in reliance on this publication.

