

Phomopsis canker

What is it?

Phomopsis canker (caused by the fungus *Phomopsis amygdali*) attacks almonds, peach and apricot. Infection results in lesions on limbs and wilted, yellow leaves.

Rain and warm temperatures during autumn promotes infections and the Australian almond production districts have suitable conditions to allow establishment of this pest if it were introduced. Spread of the fungus occurs through infected planting material.

Infected almond trees require additional treatments and pruning. Summer, autumn and spring chemical treatments are currently used in Europe, but none are fully effective in managing the fungus.

What to look for?

Symptoms of Phomopsis canker can be first detected in early spring. On affected limbs there may be dark, elliptical lesions visible around or near the buds. By late spring, a toxin produced by the fungus will cause leaves to wilt and turn yellow. New growth may die and by summer the lesions become sunken cankers that may have black dots (fruiting body of fungus) in their centre.

Infected hulls turn grey-brown and have shrivelled nuts inside.



Themis J. Michailides

Longitudinal section through a canker of Phomopsis

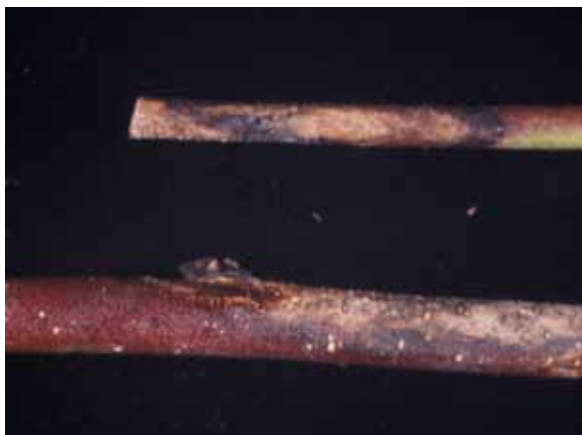


Themis J. Michailides

Cankers of Phomopsis in cross-section of almond trunks

Where is it found?

This fungus occurs in Europe, the Mediterranean, South America, and in the USA.



Themis J. Michalides

Pyrenia of Phomopsis on leaves dropped onto the ground



University of Georgia, Plant Pathology Archive, Bugwood

Phomopsis cankers and twig blights in peach

What is the best protection for my orchard?

Use clean planting material from a known source that utilises high health and hygiene strategies.

Check your orchard frequently for the presence of new pests and unusual symptoms. Make sure you are familiar with common pests so you can tell if you see something different.

If you see anything unusual, call the Exotic Plant Pest Hotline on 1800 084 881.

**EXOTIC PLANT PEST HOTLINE
1800 084 881**