

Walnut husk fly

What is it?

Walnut husk fly (*Rhagoletis completa*) is an insect pest of walnut that is not present in Australia. The larvae of this fly cause staining of the nut shell as they feed on the husk, reducing the quality of nuts sold in shell. Feeding by the maggots under the husk also make the separation of husk and shell difficult when it comes to harvest.

This pest has only one generation per year. The pupae over winter in the soil and emerge as adults come spring.

What to look for

The first sign that this pest is present in the crop are sting marks on the husks where the female has deposited eggs. These areas are often on the shaded side of the nut and soon become dark, then enlarge and become sunken. If the nuts are infected early in the season, the kernels may fail to fill properly. If you notice symptoms like this, you should report it immediately to increase the chance of a successful eradication program.

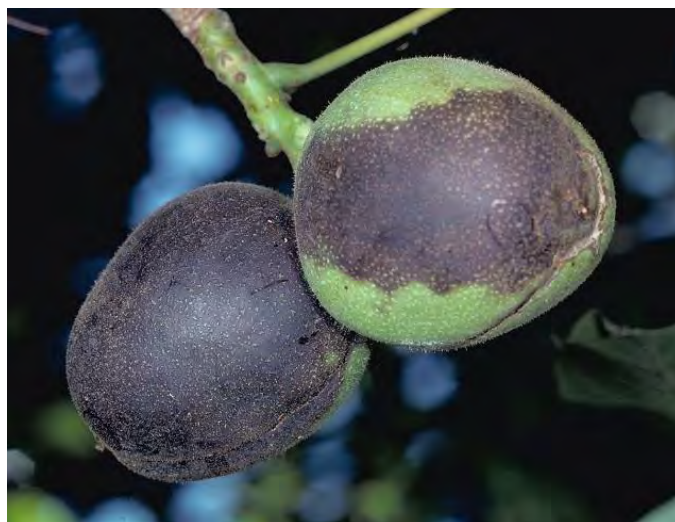
Where is it found?

This insect is found in the United States where it is present in the large Californian Walnut growing areas. It has also been reported in some European countries.



Adult walnut husk fly

Jack Kelly Clark, UC Statewide Program



Exterior damage to developing walnut husks

Jack Kelly Clark, UC Statewide Program



Jack Kelly Clark, UC Statewide Program

An example of the damage to developing walnuts caused by the larvae of the Walnut husk fly

How can I protect my orchard from Walnut husk fly?

Check your orchard frequently for the presence of new pests and unusual symptoms. Make sure you are familiar with common nut pests so you can tell if you see something different.

If you see anything unusual call the Exotic Plant Pest Hotline on 1800 084 881



Disclaimer: The material in this publication is for general information only and no person should act, or fail to act on the basis of this material without first obtaining professional advice. Plant Health Australia and all persons acting for Plant Health Australia expressly disclaim liability with respect to anything done in reliance on this publication.

